

PLAT OF PHASE 6 CUTTER SOUND P. U. D.

LYING IN SEC. 6, TWP. 38S, RGE. 41E
MARTIN COUNTY, FLORIDA
IN TWO SHEETS SHEET NO. 2

GEE & JENSON
ENGINEERS - ARCHITECTS - PLANNERS, INC.
STUART, FLORIDA
JUNE 1990



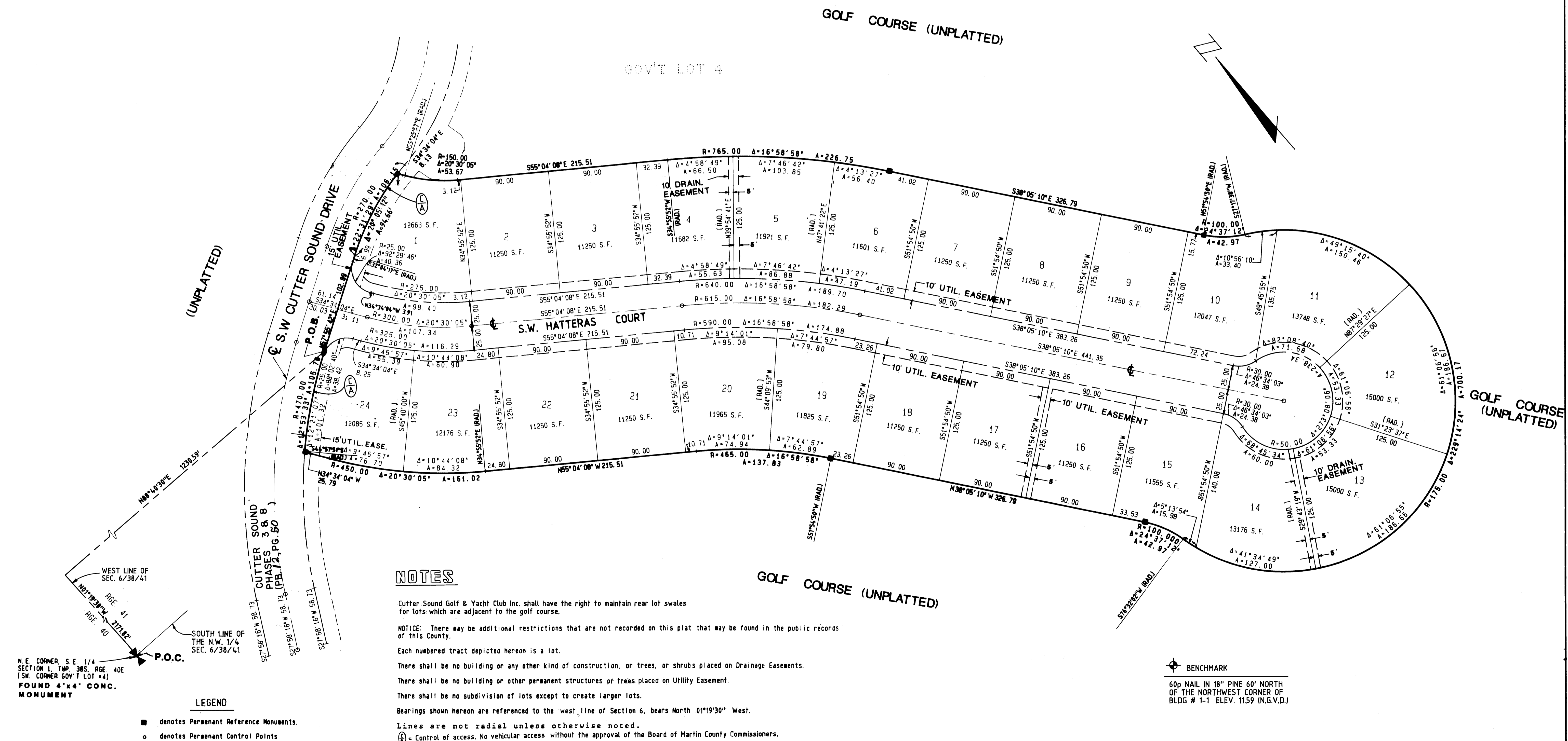
I, Marsha Stiller, Clerk of the Circuit Court of Martin County, Florida, hereby certify that this plat was filed for record in Plat Book 12, Page 51, Martin County, Florida, Public Records, This _____ day of _____, 1990.

Marsha Stiller,
Clerk Circuit Court
Martin County, Florida.

By: _____
Deputy Clerk

File No. _____

(Circuit Court Seal)



NOTES

- Cutter Sound Golf & Yacht Club Inc. shall have the right to maintain rear lot swales for lots which are adjacent to the golf course.
- NOTICE: There may be additional restrictions that are not recorded on this plat that may be found in the public records of this County.
- Each numbered tract depicted hereon is a lot.
- There shall be no building or any other kind of construction, or trees, or shrubs placed on Drainage Easements.
- There shall be no building or other permanent structures or trees placed on Utility Easement.
- There shall be no subdivision of lots except to create larger lots.
- Bearings shown hereon are referenced to the west line of Section 6, bears North 01°19'30" West.
- Lines are not radial unless otherwise noted.
- ⊙ = Control of access. No vehicular access without the approval of the Board of Martin County Commissioners.

LEGEND

- denotes Permanent Reference Monuments.
- denotes Permanent Control Points

N. E. CORNER, S. E. 1/4 SECTION 1, TWP. 38S, RGE. 40E (S.W. CORNER GOV'T LOT 44)
FOUND 4"x4" CONC. MONUMENT

⊙ BENCHMARK
60" NAIL IN 18" PINE 60" NORTH OF THE NORTHWEST CORNER OF BLDG # 1-1 ELEV. 11.59 (N.G.V.D.)